

Suikoden 4

Hidden Offence and Defence (Middleport Dungeon Theme)

Composed by
Masahiko Kimura
Arranged by
Nezkeys79

♩ = 190

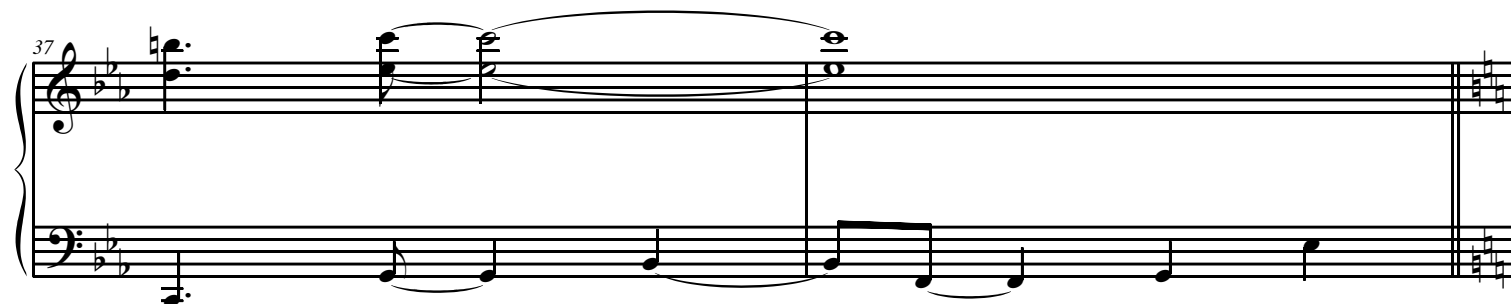
1

5

9

13

17



39

System 1 (measures 39-42). The right hand plays sustained chords in G major, while the left hand plays a descending eighth-note scale.

43

System 2 (measures 43-46). The right hand plays sustained chords in G major, while the left hand continues the descending eighth-note scale.

47

System 3 (measures 47-50). The right hand plays sustained chords in G major, while the left hand continues the descending eighth-note scale.

51

System 4 (measures 51-54). The right hand plays sustained chords in G major, while the left hand continues the descending eighth-note scale.

55

f

System 5 (measures 55-58). The right hand plays a rhythmic pattern of eighth notes and quarter notes, while the left hand continues the descending eighth-note scale.

59

System 6 (measures 59-62). The right hand plays a rhythmic pattern of eighth notes and quarter notes, while the left hand continues the descending eighth-note scale.

63

System 1 (Measures 63-66): Treble clef contains eighth-note chords and single notes. Bass clef contains a steady eighth-note accompaniment.

67

System 2 (Measures 67-70): Treble clef features a long sustained chord in measure 67, followed by eighth-note runs. Bass clef continues the eighth-note accompaniment with a long sustained chord in measure 70.

71

f

System 3 (Measures 71-74): Treble clef has eighth-note chords. Bass clef continues the eighth-note accompaniment. A forte (*f*) dynamic marking is present in measure 71.

75

System 4 (Measures 75-78): Treble clef has eighth-note chords. Bass clef continues the eighth-note accompaniment, with a key signature change to two flats (B-flat and E-flat) starting in measure 75.

79

System 5 (Measures 79-82): Treble clef has eighth-note chords. Bass clef continues the eighth-note accompaniment in the key of two flats.

83

System 6 (Measures 83-86): Treble clef features a long sustained chord in measure 83, followed by whole notes. Bass clef continues the eighth-note accompaniment. The system ends with a double bar line and repeat dots.